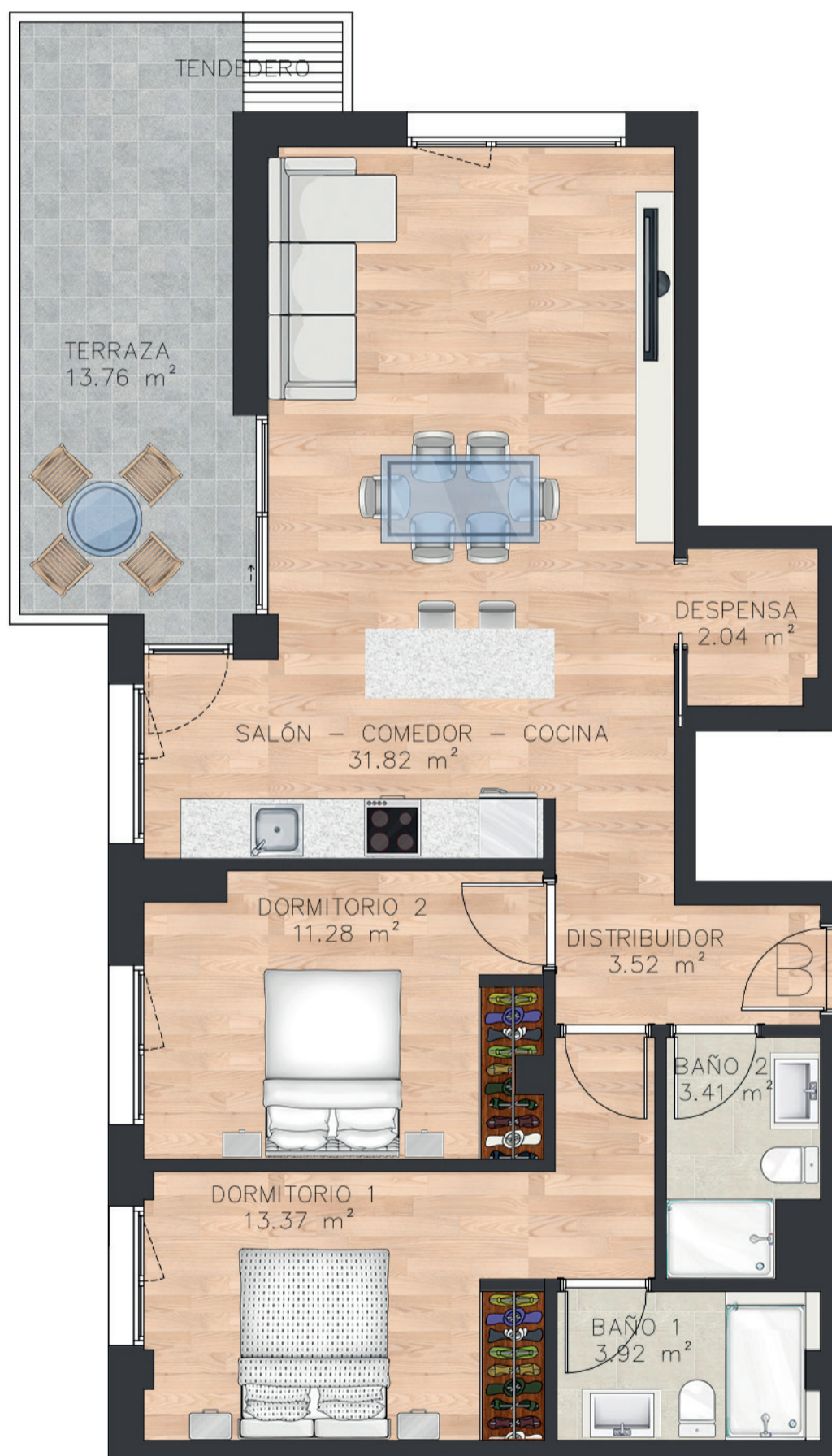
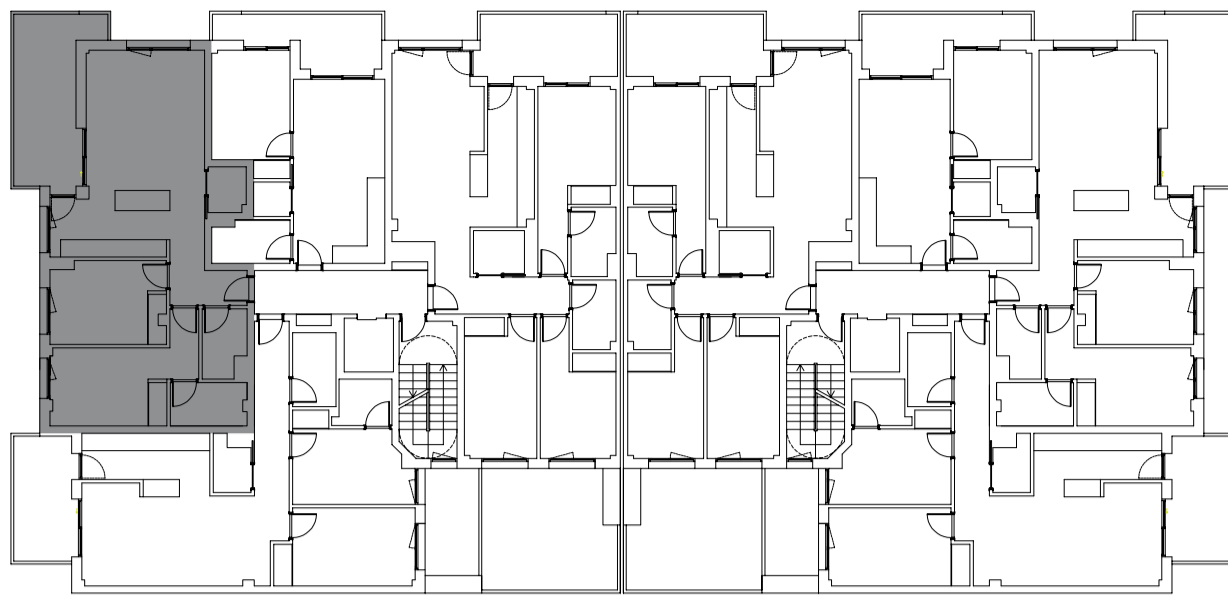




RESIDENCIAL  
**FINCA**  
LA **TORRE**



## PLANTA TIPO 2,3,4 B PORTAL 1

METROS CONSTRUIDOS 82.87m<sup>2</sup> (+ 13.76m<sup>2</sup> terraza)

METROS ÚTILES 69.36 m<sup>2</sup> (+ 13.76 m<sup>2</sup> terraza)

[WWW.RESIDENCIALFINCALATORRE.COM](http://WWW.RESIDENCIALFINCALATORRE.COM)