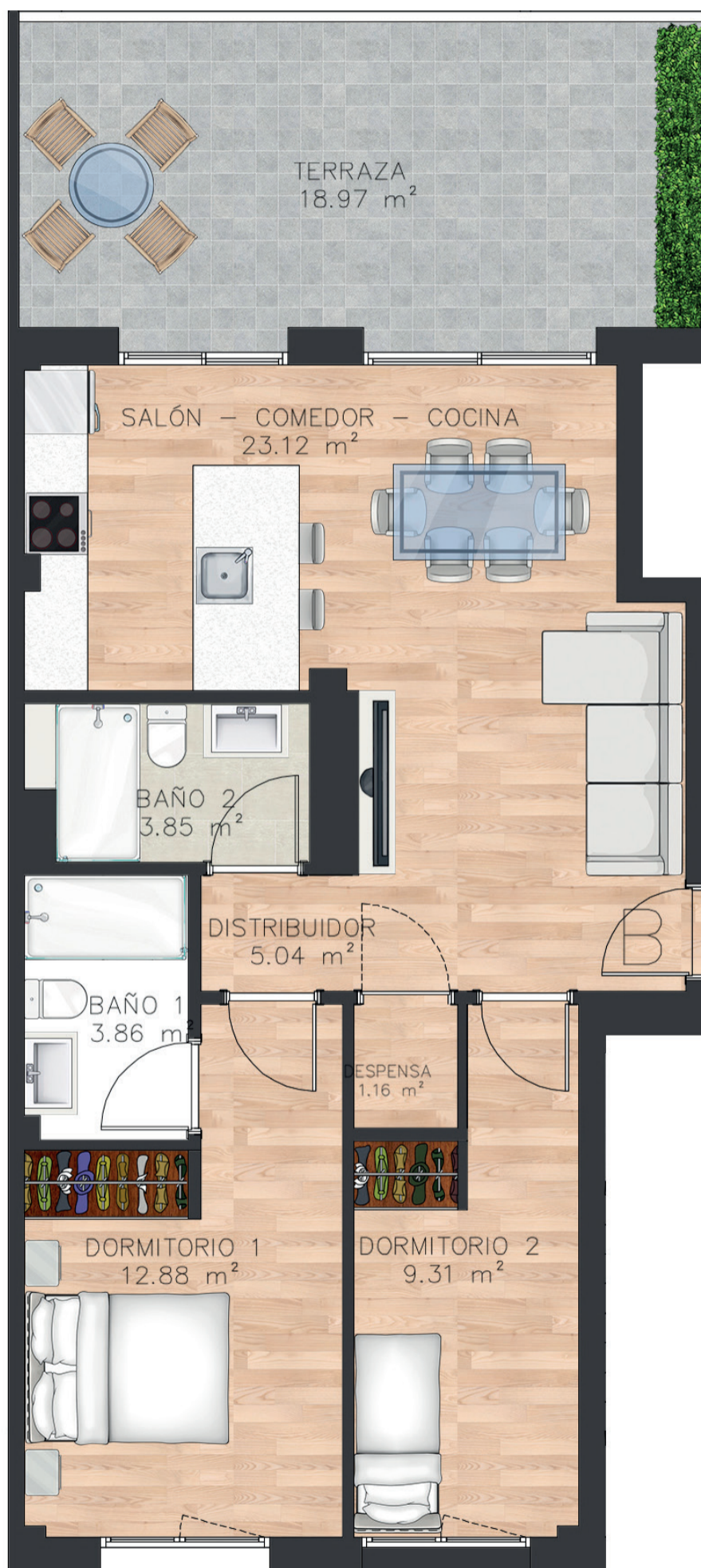
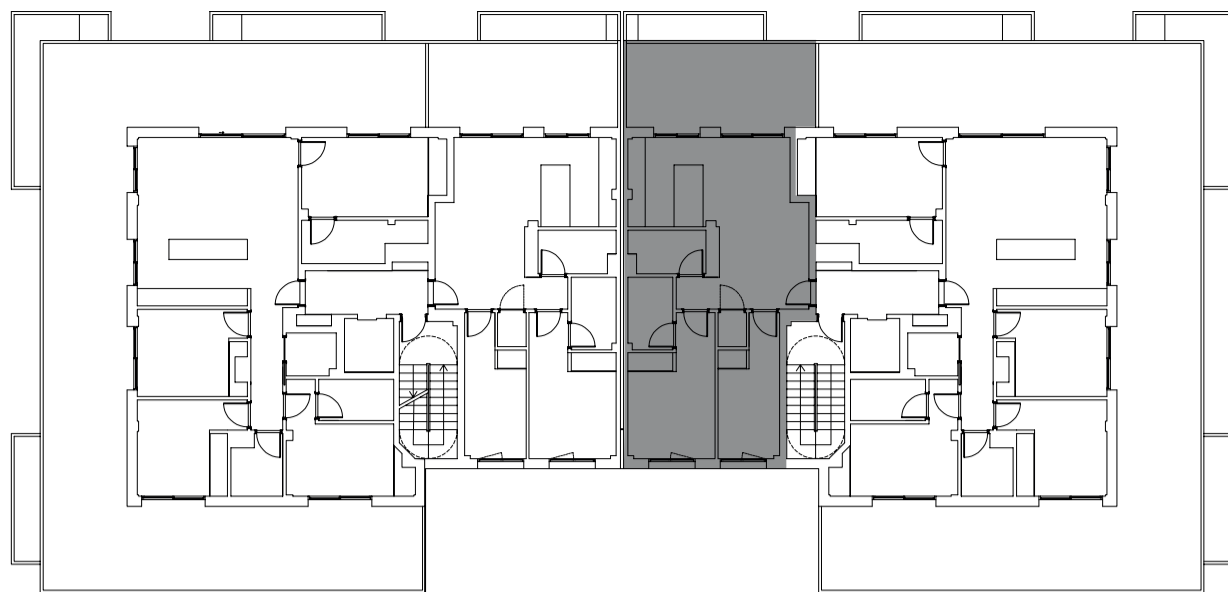




RESIDENCIAL  
**FINCA**  
LA **TORRE**



## PLANTA ÁTICO B PORTAL 2

METROS CONSTRUIDOS 70.20 m<sup>2</sup> (+ 18.97 m<sup>2</sup> terraza)

METROS ÚTILES 59,22 m<sup>2</sup> (+ 18.97 m<sup>2</sup> terraza)

[WWW.RESIDENCIALFINCALATORRE.COM](http://WWW.RESIDENCIALFINCALATORRE.COM)